

**What's the purpose of the Photo Contest?**

Photos are displayed at the New Mexico State Fair in September. The top twelve photos are featured in the New Mexico 4-H calendar sponsored by the El Paso Electric Company.



# Bernalillo County 4-H

## State 4-H

Bernalillo Cooperative Extension  
1510 Menaul NW  
Albuquerque, NM

Phone: 505-243-1386  
Fax: 505-243-1545  
E-mail: [trowland@nmsu.edu](mailto:trowland@nmsu.edu)

State 4-H


# Photography Contest


**4-H To Make  
the Best  
Better**


505-243-1386




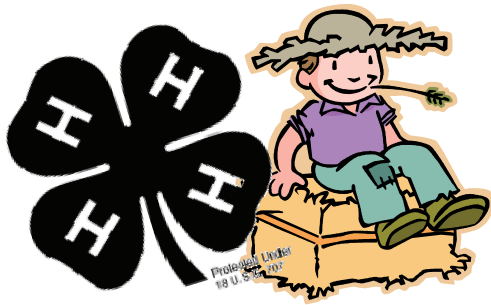
# State 4-H Photography Contest

 Members may enter up to three entries in each category. Each photo entry set must be accompanied by a Member Information sheet.

 Entries must be at least 4X6 in size and may be color or black and white. Photos will not be returned!!!

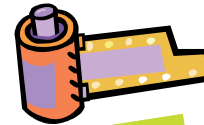
 If you want to keep your photo please retain a copy.

 Photographs must be the work of the 4-H member, taken during the current 4-H program year.



## Who can enter the Photo Contest?

Any 4-H member, ages 9-19, can enter. Entrants don't have to be enrolled in the photography project..



## Categories

### Film Photo:

Beginner-Beginners are youth who have zero to three years of experience taking photographs

Advanced- Advanced photographers are youth with four or more years of experience taking photographs

Special Effects- Any photo that has utilized a special technique to acquire a unique perspective or effect may be entered in this category. All photos will be judged together regardless of skill level.

### Digital Photo:

Beginner-Beginners are youth who have zero to three years of experience taking photographs

Advanced- Advanced photographers are youth with four or more years of experience taking photographs

Special Effects- Any photo that has been enhanced or adjusted through the use of camera features or a personal computer should be entered in this category. Entries must include original unaltered photo.



### State 4-H

Bernalillo Cooperative Extension  
1510 Menaul NW  
Albuquerque, NM

Phone: 505-243-1386  
Fax: 505-243-1545  
E-mail: [trowland@nmsu.edu](mailto:trowland@nmsu.edu)